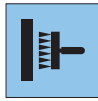


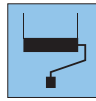
## Product advantages



No soaking required



'Paste the wall'



Easy to paint



Less paint needed



Knock-resistant



Covers cracks



PVC-free



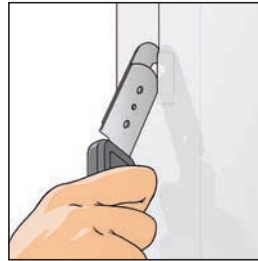
Flame retardant



Dispersion adhesive

## Hanging instructions

**1.** Use 'paste the wall' technique. No soaking required. Use a good quality paste suitable for 'paste the wall' products or apply directly to a wet painted surface.



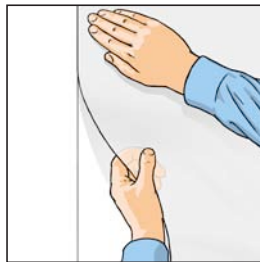
**4.** If the layers overlap on cut through both layers of wallpaper with a sliding foot knife in the centre of the overlap.

**2.** Lay the ERFURT Variovlies® A 50 Basic into the adhesive/paint and smooth out any excess adhesive/paint with a roller.



**5.** Trim off excess material with a knife and a straight edge where it meets the ceiling, skirting boards or windows.

**3a.** Butt the lengths of wallpaper together.



**6.** Allow to dry before applying 1 to 2 coats of good quality emulsion paint (DIN EN 13300).

**3b.** The lengths of wallpaper can also overlap each other.



## Product description

### Manufacturer

Erfurt & Sohn KG  
Hugo-Erfurt-Straße 1  
42399 Wuppertal  
www.erfurt.com

### Product name

ERFURT-Variovlies® A 50 Basic

### Raw materials/Manufacture

ERFURT-Variovlies® A 50 Basic is a thermally fixed polyester nonwoven product.

### Product data

- Order no. 752
- Roll dimensions: 50 m long x 1.0 m wide
- Carton content: 4 rolls
- Weight: approx. 50 g/m<sup>2</sup>
- Edge-trimmed and shrink-wrapped

### Product features

- Highly flame retardant as per DIN 4102-B1 when used with mineral base surfaces
- For interior and exterior walls
- Does not contain PVC, softeners and solvents
- Does not contain fibre glass
- Does not contain heavy metal compounds and formaldehyde
- Dimensionally stable and covers cracks
- Very hard-wearing when used with the appropriate paint
- Can be painted over several times with commercial paints

### Suitable base surfaces

All normal mineral base surfaces, plaster, plasterboard, hard-fibre plates, prefabricated building materials, firmly-adhering old paint.

The base surface must be clean and stable.

Apply primer to heavily-absorbent base surfaces.

Remove old wallpaper and peeling paint.

## Application/Hanging

ERFURT-Variovlies® A 50 Basic polyester nonwoven is ideal for covering cracked plaster prior to painting.

ERFURT-Variovlies® A 50 Basic evens out base surfaces when filler has been used.

### Hanging instructions

ERFURT Variovlies® A 50 Basic is generally laid in emulsion paint (wet abrasion class 2) or emulsion adhesive and is smoothed out with a palette knife or roller. Butt the lengths of wallpaper together. ERFURT Variovlies® A 50 Basic can also overlap approx. 5 cm if required. Make a cut through both layers for a clean joint. For extra reinforcement outside, press the overlapping lengths down to the thickness of the nonwoven material and do not cut it.

### Painting

Allow the ERFURT-Variovlies® A 50 Basic to dry before applying one or two coats of emulsion paint (DIN EN 13300) depending on whether it is used on interior or exterior walls. Alternatively plaster can also be applied to it or it can act as a base surface for the ERFURT façade system.