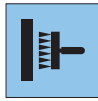


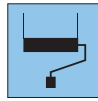
## Product advantages



No soaking required



'Paste the wall'



Easy to paint



Less paint needed



Knock-resistant



Covers cracks



PVC-free



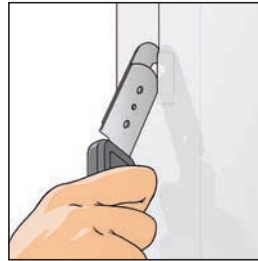
Flame retardant



Dispersion adhesive

## Hanging instructions

**1.** Use 'paste the wall' technique. No soaking required. Use a good quality paste suitable for 'paste the wall' products or apply directly to a wet painted surface.



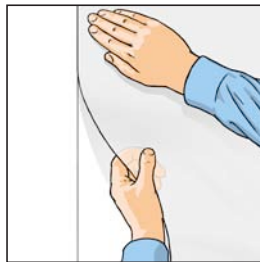
**4.** If the layers overlap on cut through both layers of wallpaper with a sliding foot knife in the centre of the overlap.

**2.** Lay the ERFURT Variovlies® A 40 into the adhesive/paint and smooth out any excess adhesive/paint with a roller.



**5.** Trim off excess material with a knife and a straight edge where it meets the ceiling, skirting boards or windows.

**3a.** Butt the lengths of wallpaper together.



**6.** Allow to dry before applying 1 to 2 coats of good quality emulsion paint (DIN EN 13300).

**3b.** The lengths of wallpaper can also overlap each other.



## Product description

### Manufacturer

Erfurt & Sohn KG  
Hugo-Erfurt-Straße 1  
42399 Wuppertal  
www.erfurt.com

### Product name

ERFURT-Variolvlies® A 40

### Raw materials/Manufacture

ERFURT-Variolvlies® A 40 is a smooth wallcovering, manufactured using special cellulose and textile fibres, combined with polymer binding agents.

### Product data

- Order no. 761
- Roll dimensions: 50 m long x 1.0 m wide
- Carton content: 4 rolls
- Weight: approx. 40 g/m<sup>2</sup>
- Edge-trimmed and shrink-wrapped

### Product features

- Good performance when covering contrasting paint finishes on the base surface
- The water-vapour permeability as per DIN 52615 corresponds to a diffusion-equivalent air layer density of 0.02 m
- Highly flame retardant as per DIN 4102-B1 when used with mineral base surfaces
- Does not contain PVC, softeners and solvents
- Does not contain fibre glass
- Does not contain heavy metal compounds and formaldehyde
- Dimensionally stable and covers cracks
- Very hard-wearing when used with appropriate paints
- Easily removable when wet
- Can be painted over several times with commercial paints

### Suitable base surfaces

All normal mineral base surfaces, plaster, plasterboard, hard-fibre plates, prefabricated building materials, firmly-adhering old paint.

The base surface must be clean and stable.

Apply primer to heavily-absorbent base surfaces.

Remove old wallpaper and peeling paint.

## Application/Hanging

ERFURT-Variolvlies® A 40 polyester nonwoven is ideal for use on plasterboard.

### Hanging instructions

ERFURT-Variolvlies® A 40 is generally laid in emulsion paint (wet abrasion class 2) or emulsion adhesive and is smoothed out with a palette knife or roller. Butt the lengths of wallpaper together. ERFURT-Variolvlies® A 40 can also overlap approx. 5 cm if required. Make a cut through both layers for a clean joint. For extra reinforcement outside, press the overlapping lengths down to the thickness of the nonwoven material and do not cut it.

### Painting

Allow the ERFURT-Variolvlies® A 40 to dry before applying one or two coats of emulsion paint (DIN EN 13300).